



GODIVA CHOCOLATIER, Inc.

333 West 34th Street
New York, NY
Office 212.984.5900

CLIENT

HBC The Bay

PROJECT

The Bay Queen St
Toronto, Ontario

DRAWN BY

Store Planning & Design Team

ISSUE

08.11.2014

REVISIONS

08.20.2014

10.27.2014

02.18.2015

DESCRIPTION

Proposed Layout Lower Level



GODIVA CHOCOLATIER, Inc.

333 West 34th Street
New York, NY
Office 212.984.5900

CLIENT

HBC The Bay

PROJECT

The Bay Queen St
Toronto, Ontario

DRAWN BY

Store Planning & Design Team

ISSUE

08.11.2014

REVISIONS

08.20.2014

10.27.2014

02.18.2015

DESCRIPTION

Proposed Layout Lower Level



GODIVA CHOCOLATIER, Inc.
333 West 34th Street
New York, NY
Office 212.984.5900

CLIENT
HBC The Bay

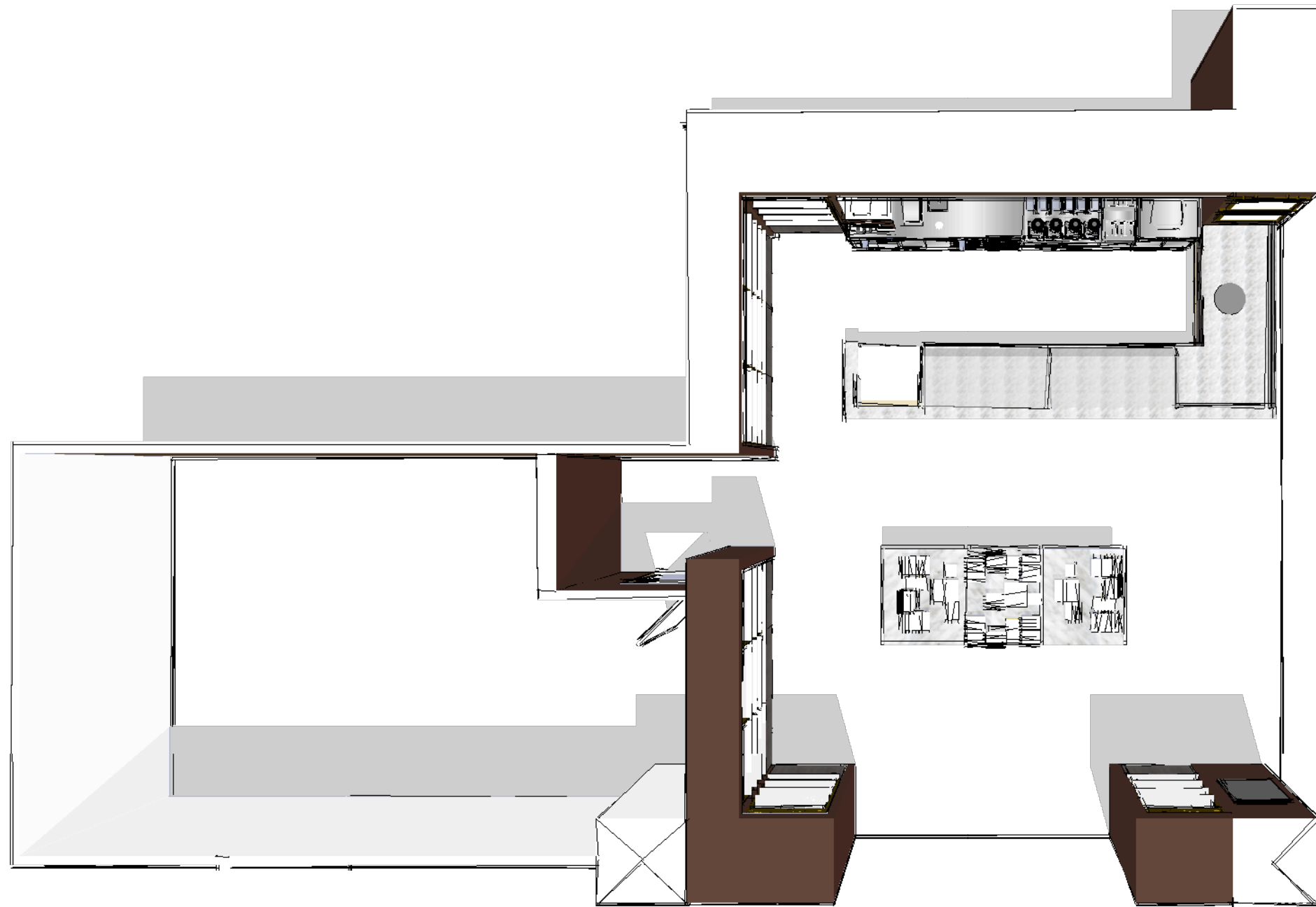
PROJECT
The Bay Queen St
Toronto, Ontario

DRAWN BY
Store Planning & Design Team

ISSUE
08.11.2014

REVISIONS
08.20.2014
10.27.2014
02.18.2015

DESCRIPTION
Proposed Layout Lower Level



GODIVA CHOCOLATIER, Inc.
333 West 34th Street
New York, NY
Office 212.984.5900

CLIENT
HBC The Bay

PROJECT
The Bay Queen St
Toronto, Ontario

DRAWN BY
Store Planning & Design Team

ISSUE
08.11.2014

REVISIONS
08.20.2014
10.27.2014
02.18.2015

DESCRIPTION
Proposed Layout Lower Level



GODIVA CHOCOLATIER, Inc.
333 West 34th Street
New York, NY
Office 212.984.5900

CLIENT
HBC The Bay

PROJECT
The Bay Queen St
Toronto, Ontario

DRAWN BY
Store Planning & Design Team

ISSUE
08.11.2014

REVISIONS
08.20.2014
10.27.2014

DESCRIPTION
Proposed Layout Lower Level



GODIVA CHOCOLATIER, Inc.
333 West 34th Street
New York, NY
Office 212.984.5900

CLIENT
HBC The Bay

PROJECT
The Bay Queen St
Toronto, Ontario

DRAWN BY
Store Planning & Design Team

ISSUE
08.11.2014

REVISIONS
08.20.2014
10.27.2014

DESCRIPTION
Proposed Layout Lower Level

GODIVA CHOCOLATIER, Inc.
333 West 34th Street
New York, NY
Office 212.984.5900

CLIENT
HBC The Bay

PROJECT
The Bay Queen St
Toronto, Ontario

DRAWN BY
Store Planning & Design Team

ISSUE
08.11.2014

REVISIONS
08.20.2014
10.27.2014

DESCRIPTION
Proposed Layout Lower Level

SHEET No
3 of 4



GODIVA CHOCOLATIER, Inc.
333 West 34th Street
New York, NY
Office 212.984.5900

CLIENT
HBC The Bay

PROJECT
The Bay Queen St
Toronto, Ontario

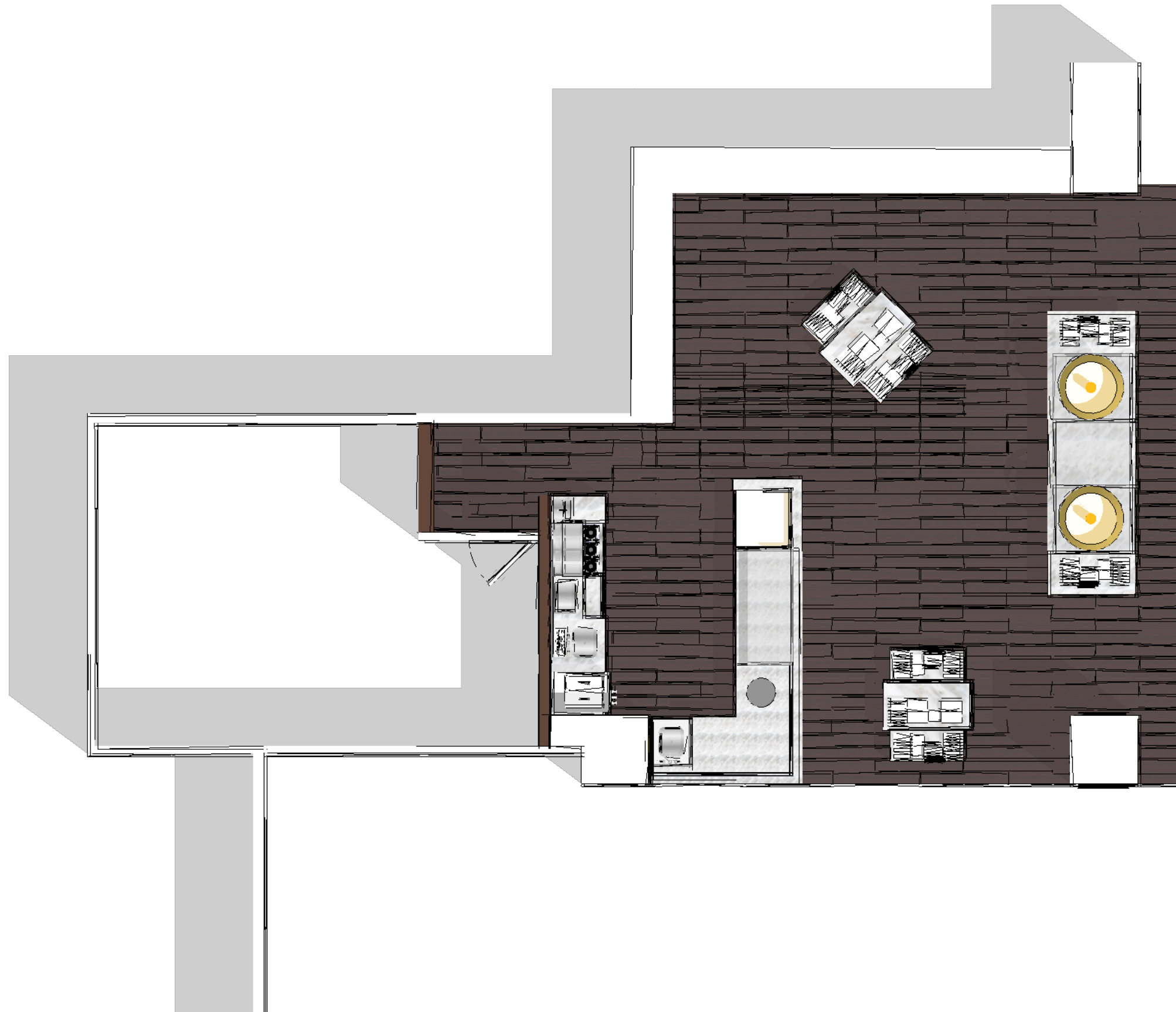
DRAWN BY
Store Planning & Design Team

ISSUE
08.11.2014

REVISIONS
08.20.2014
10.27.2014

DESCRIPTION
PLAN

SHEET No
4 of 4





GODIVA CHOCOLATIER, Inc.
333 West 34th Street
New York, NY
Office 212.984.5900

CLIENT
HBC The Bay

PROJECT
The Bay Queen St
Toronto, Ontario

DRAWN BY
Store Planning & Design Team

ISSUE
08.11.2014

REVISIONS
08.20.2014

DESCRIPTION
Proposed Layout Lower Level



GODIVA CHOCOLATIER, Inc.
333 West 34th Street
New York, NY
Office 212.984.5900

CLIENT
HBC The Bay

PROJECT
The Bay Queen St
Toronto, Ontario

DRAWN BY
Store Planning & Design Team

ISSUE
08.11.2014

REVISIONS
08.20.2014

DESCRIPTION
Proposed Layout Lower Level



GODIVA CHOCOLATIER, Inc.
333 West 34th Street
New York, NY
Office 212.984.5900

CLIENT
HBC The Bay

PROJECT
The Bay Queen St
Toronto, Ontario

DRAWN BY
Store Planning & Design Team

ISSUE
08.11.2014

REVISIONS
08.20.2014

DESCRIPTION
Proposed Layout Lower Level

PAINTED COLUMN
BENJAMIN MOORE #2114-10
BITTER SWEET CHOCOLATE
SATIN FINISH

FLOORING FINISH
PROVIDED & INSTALLED BY HBC

GODIVA CHOCOLATIER, Inc.
333 West 34th Street
New York, NY
Office 212.984.5900

CLIENT
HBC The Bay

PROJECT
The Bay Queen St
Toronto, Ontario

DRAWN BY
Store Planning & Design Team

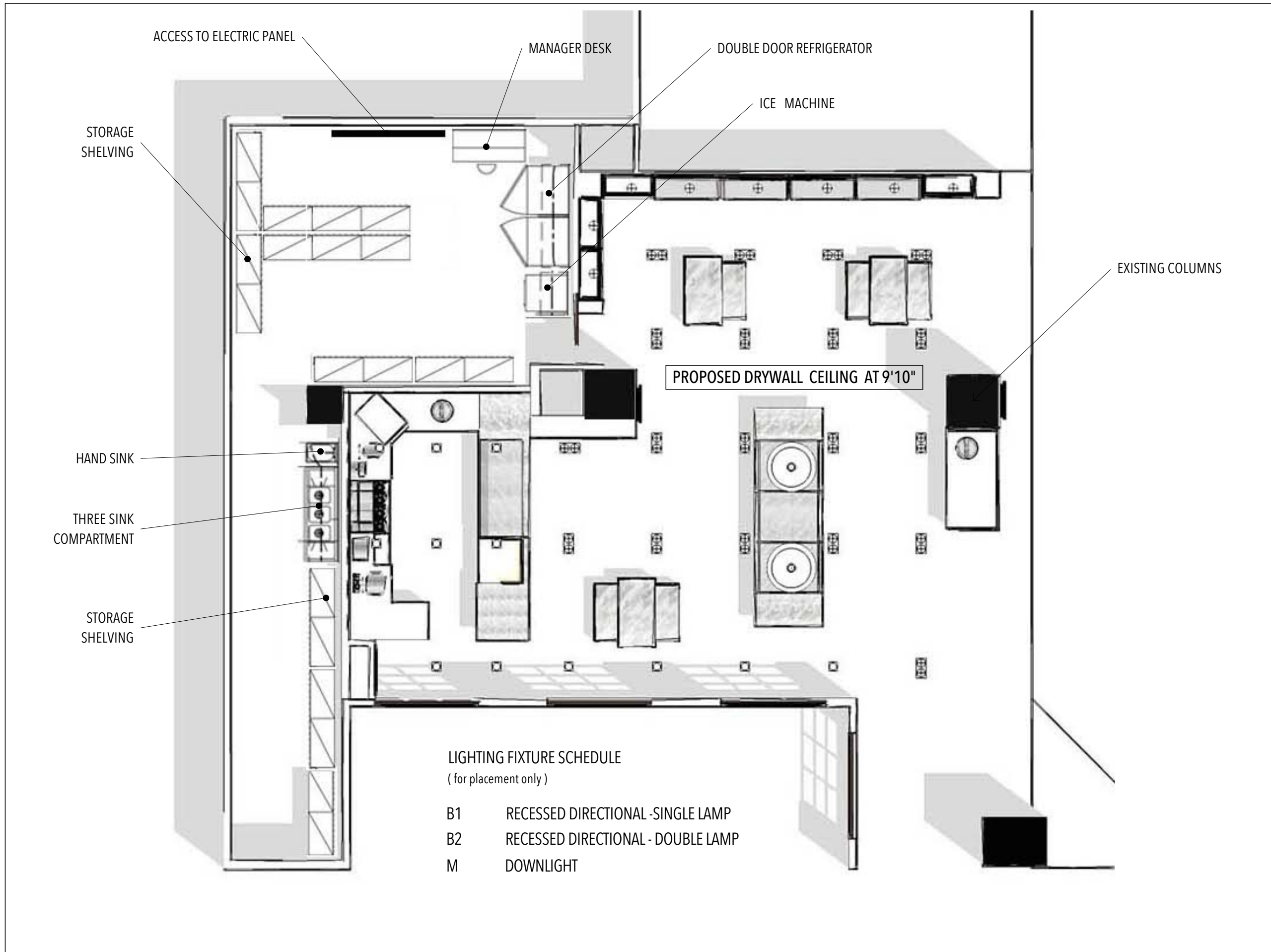
ISSUE
08.11.2014

REVISIONS
08.20.2014

DESCRIPTION
Proposed Layout Lower Level

SHEET No
4 of 4





GODIVA CHOCOLATIER, Inc.
333 West 34th Street
New York, NY
Office 212.984.5900

CLIENT
HBC The Bay

PROJECT
The Bay Queen St
Toronto, Ontario

DRAWN BY
Store Planning & Design Team

ISSUE
08.11.2014

REVISIONS
08.20.2014

DESCRIPTION
- Proposed Lighting Plan
- Stock Room Equipment
(All for reference only)