







**Cartier High Watch Making - Joyeria Daoro  
CCS, Venezuela**



**HWM Counter and Cloches**

*Cartier*

**Espace Cartier**

*Latin America & Caribbean*

CCS, Venezuela

DAORO

3D Render

Scale 1:25

Index

Update

Date 09/15/2009

Drawn By ACH

Sheet number 1

*Cartier*

**Espace Cartier**

*Latin America & Caribbean*



**Espace Cartier**      *BARED - Pavillion Limoge San Juan, PR*

San Juan, PR

**Pavillion Limoges**

3D Render

Scale                      1:25

Index

Update

Date                      07/30/09

Drawn By                      ACH

Sheet number                      3

*Cartier*

**Espace Cartier**  
*Latin America & Caribbean*

Bogota Airport

MOTTA

3D Render

Scale 1:25

Index

Update 09/03/2009

Date 09/04/2009

Drawn By ACH

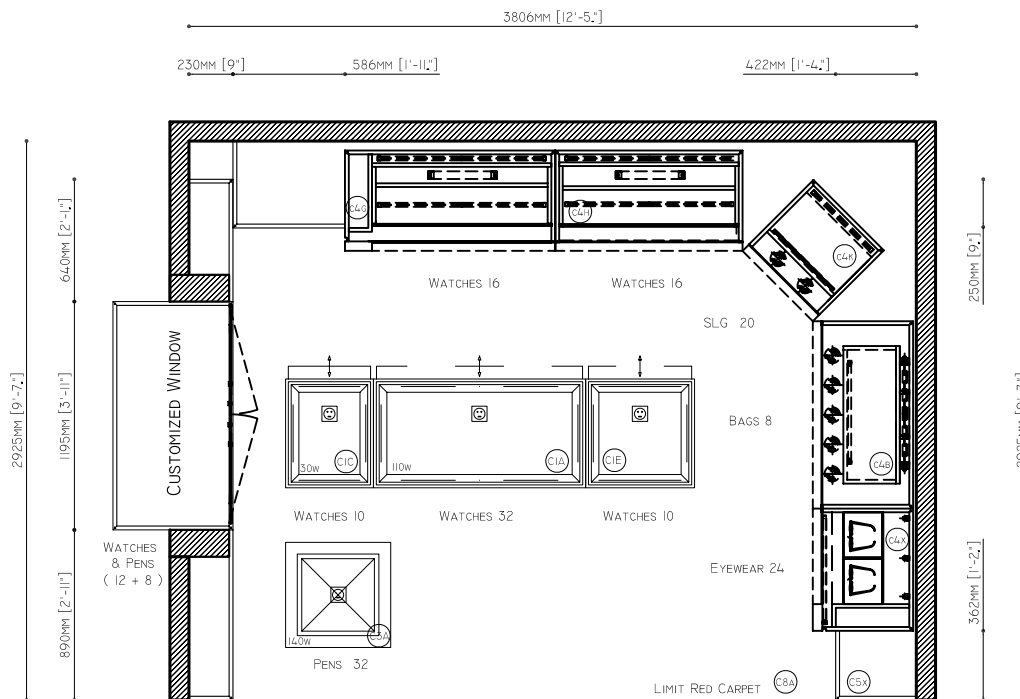
Sheet number 1



**Customized Side Window**



**Espace Cartier** El Dorado Int' Airport - Bogota, Colombia



PLAN

ELECTRICAL LEGEND

- ⚡ ELECTRICAL SUPPLY  
H.: 2250MM - 7' - 4.32"
- ⊕ ELECTRICAL GROUND SOCKET
- ⊙ ELECTRICAL PLUG

ELECTRICAL CHARACTERISTICS

FREQUENCY: 60 HZ  
TENSION: 110 VOLTS

LEGEND

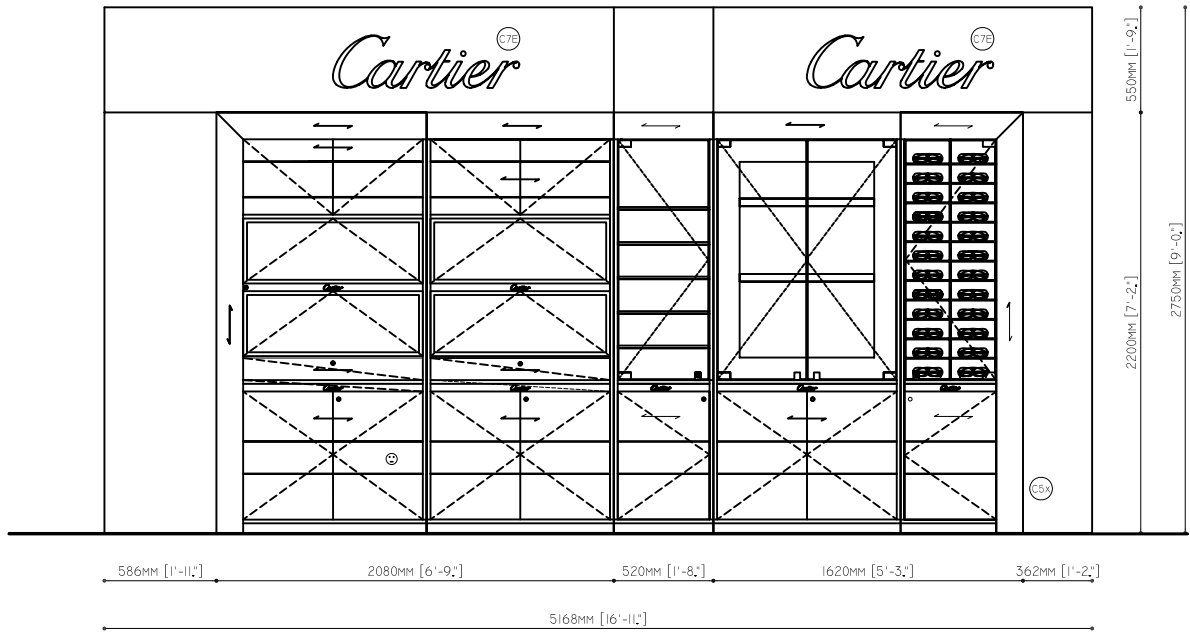
- C4G BW LEFT SHOWCASE WATCHES
- C4H BW CENTRAL SHOWCASE WATCHES
- C4B HALF BW CENTRAL SHELF ACCESSORIES WITH GLASS DOORS
- C4E BW CENTRAL SHELF BAGS
- C4X RIGHT BW EYEWEAR
- C4A COUNTER Mc110 WATCHES
- C4E COUNTER Mc570 WATCHES
- C3A ACCESSORIES TOWER PENS
- C4C COUNTER Mc450 WATCHES
- C8A RED CARPET

*Cartier*

BACK WALL

45 DEGREE ANGLE

RIGHT WALL



PLAN

ELECTRICAL LEGEND

- ⚡ ELECTRICAL SUPPLY  
H.: 2250MM - 7' - 4.52"
- ⊕ ELECTRICAL GROUND SOCKET
- ⊙ ELECTRICAL PLUG

ELECTRICAL CHARACTERISTICS

FREQUENCY: 60 HZ  
TENSION: 110 VOLTS

LEGEND

- C4G BW LEFT SHOWCASE WATCHES
- C4H BW CENTRAL SHOWCASE WATCHES
- C4B HALF BW CENTRAL SHELF ACCESSORIES WITH GLASS DOORS
- C4E BW CENTRAL SHELF BAGS
- C4X RIGHT BW EYEWEAR
- C5X RED FRAME
- C7E CARTIER LOGO BACKLIT 1000MM

**Espace Cartier**  
Latin America & Caribbean

Bogota Airport

MOTTA

Elevation

Scale 1:25

Index

Update 09/03/2009

Date 08/04/2009

Drawn By ACH

Sheet number 2