
GODIVA CHOCOLATIER, Inc.
333 West 34th Street
New York, NY
Office 212.984.5900

CLIENT
Aelia

PROJECT
CDG Airport
FRANCE

DRAWN BY
Store Planning & Design Team

ISSUE
17.08.2015

REVISIONS
00.00.00

DESCRIPTION
PODIUM PROPOSAL

SHEET No
1 of 4



GODIVA PODIUM - AELIA, PARIS AIRPORT





OPTION A

ARCH, DIPPING UNIT & SIDE PODIUM



OPTION B

ARCH & TASTING COUNTER (STOOLS OPTIONAL)

GODIVA CHOCOLATIER, Inc.
333 West 34th Street
New York, NY
Office 212.984.5900

CLIENT
Aelia

PROJECT
CDG Airport
FRANCE

DRAWN BY
Store Planning & Design Team

ISSUE
17.08.2015

REVISIONS
00.00.00

DESCRIPTION
ARCH & SERVING OPTIONS

GODIVA CHOCOLATIER, Inc.
333 West 34th Street
New York, NY
Office 212.984.5900

CLIENT
Aelia

PROJECT
CDG Airport
FRANCE

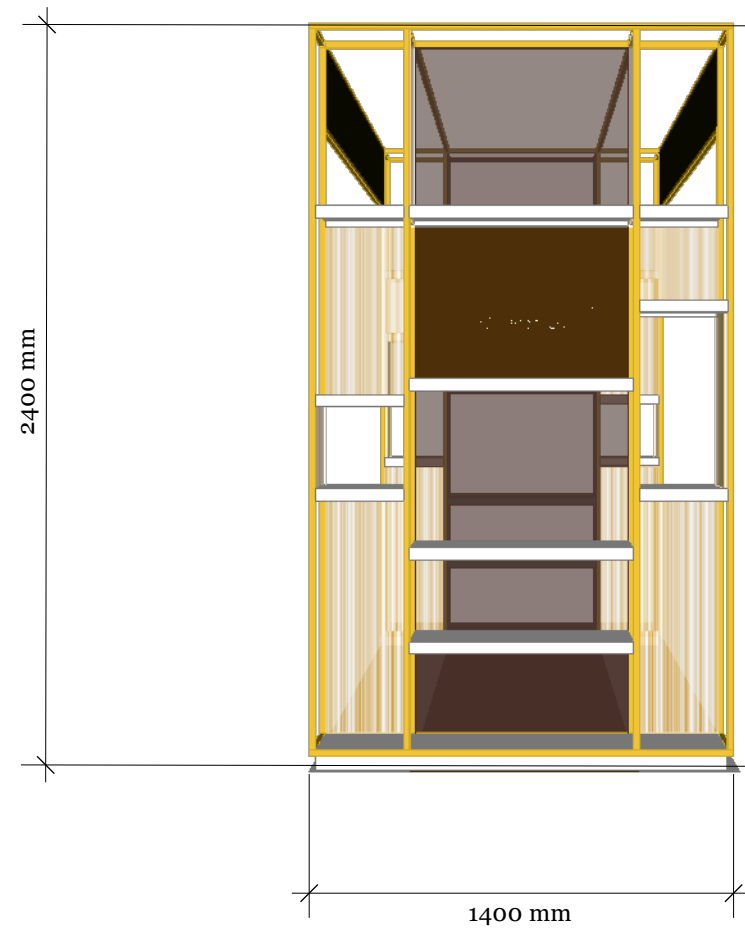
DRAWN BY
Store Planning & Design Team

ISSUE
17.08.2015

REVISIONS
00.00.00

DESCRIPTION
ARCH DETAILS & DIMENSIONS

SHEET No
3 of 4



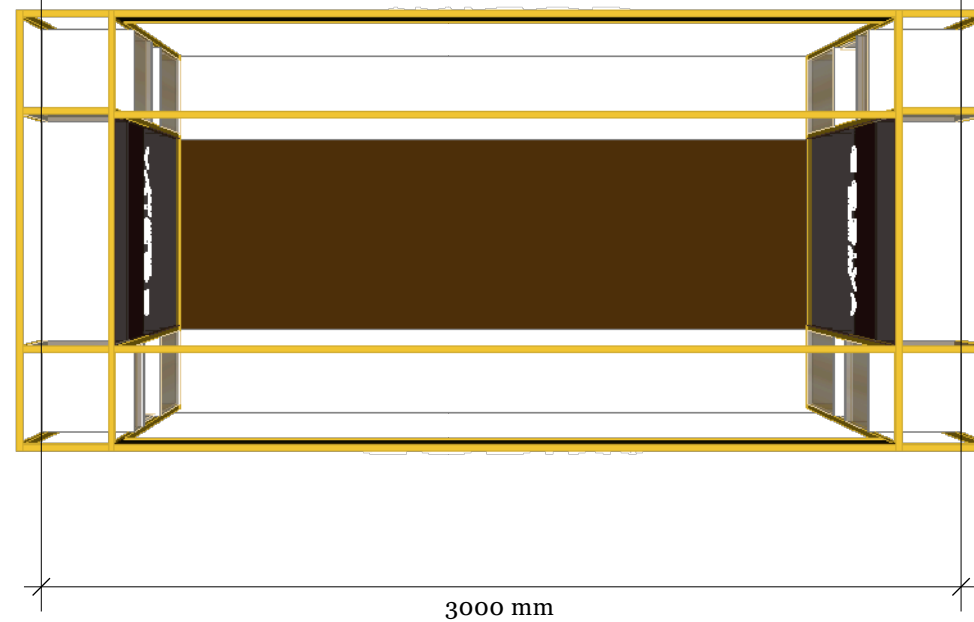
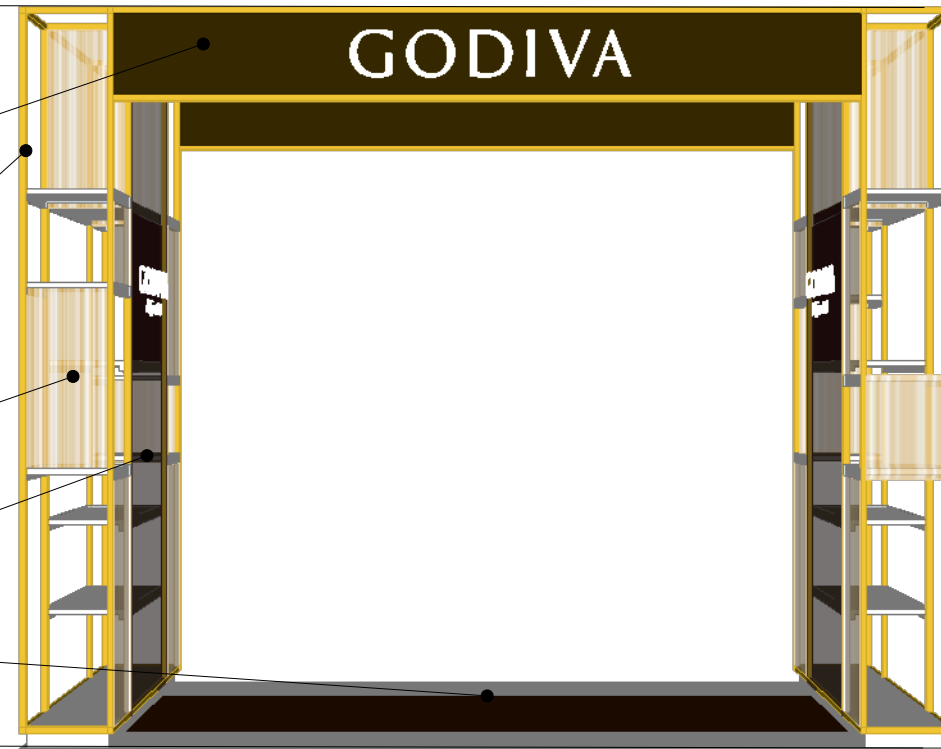
Chocolate Brown Panel

Gold / Bronze Frame

Clear Plexiglass / Glass
with Gold Stream Detail

Semi-translucent
Brown Plexiglass

Vynil Flooring



NOTE: ALL DIMENSION & FINISHES TO BE CONFIRMED.



GODIVA PODIUM - AELIA, PARIS AIRPORT

GODIVA CHOCOLATIER, Inc.
333 West 34th Street
New York, NY
Office 212.984.5900

CLIENT
Aelia

PROJECT
CDG Airport
FRANCE

DRAWN BY
Store Planning & Design Team

ISSUE
17.08.2015

REVISIONS
00.00.00

DESCRIPTION
PODIUM PROPOSAL

SHEET No
4 of 4



GODIVA PODIUM - AELIA, PARIS AIRPORT
(Revised version 17.08.2015)

GODIVA CHOCOLATIER, Inc.
333 West 34th Street
New York, NY
Office 212.984.5900

CLIENT
Aelia

PROJECT
CDG Airport
FRANCE

DRAWN BY
Store Planning & Design Team

ISSUE
17.08.2015

REVISIONS
19.08.2015

DESCRIPTION
PODIUM PROPOSAL

SHEET No
1 of 3



GODIVA PODIUM - AELIA, PARIS AIRPORT
NOTE: ALL DIMENSION & SPECS ON COUNTERS TO BE CONFIRMED
OBASED ON EQUIPMENT REQUIREMENTS.

GODIVA CHOCOLATIER, Inc.
333 West 34th Street
New York, NY
Office 212.984.5900

CLIENT
Aelia

PROJECT
CDG Airport
FRANCE

DRAWN BY
Store Planning & Design Team

ISSUE
17.08.2015

REVISIONS
19.08.2015

DESCRIPTION
ARCH & SERVING OPTIONS

GODIVA CHOCOLATIER, Inc.
333 West 34th Street
New York, NY
Office 212.984.5900

CLIENT
Aelia

PROJECT
CDG Airport
FRANCE

DRAWN BY
Store Planning & Design Team

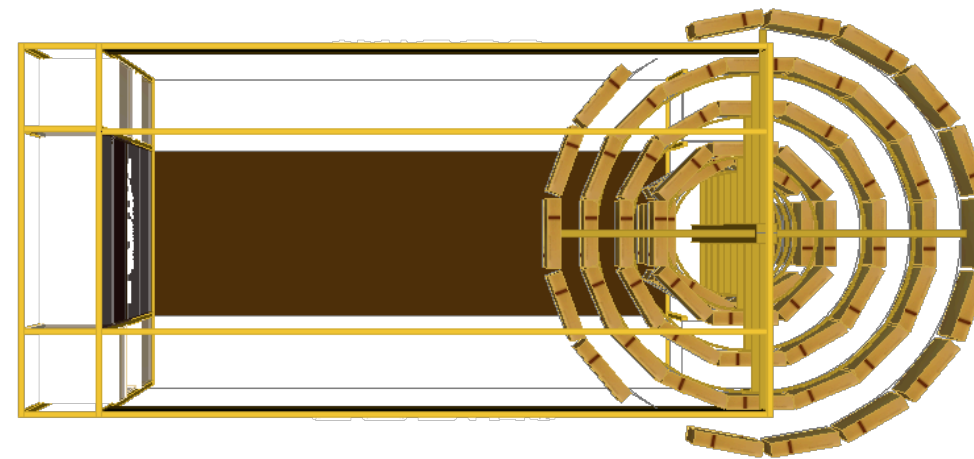
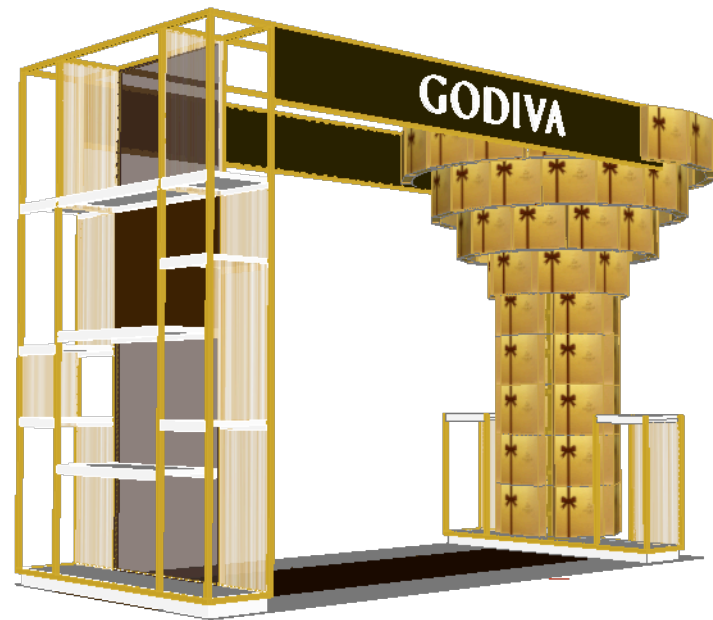
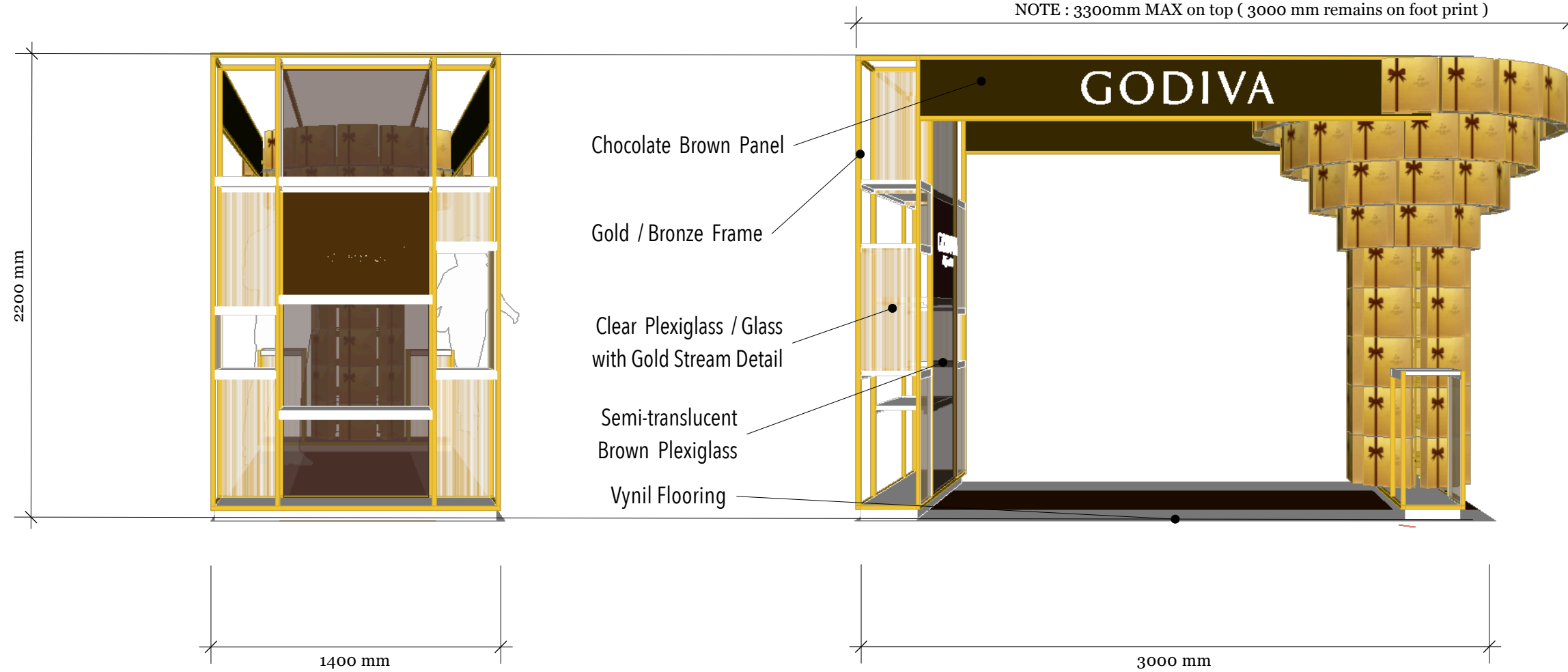
ISSUE
17.08.2015

REVISIONS
19.08.2015

DESCRIPTION
ARCH DETAILS & DIMENSIONS

SHEET No
3 of 3

NOTE : 3300mm MAX on top (3000 mm remains on foot print)



NOTE: ALL DIMENSION & FINISHES TO BE CONFIRMED.



LAST CONCEPT REVIEWED WITH GOLD CHANDELIER & TABLE



PORTAL WITH SINGLE DIPPING & PODIUM